



The Value of
**ThickenUp®
GEL EXPRESS**



Quick and simple preparation of thickened beverages
for patients with oropharyngeal dysphagia (OD)

**THICKENUP® GEL EXPRESS IS A NOVEL CONCENTRATED LIQUID THICKENER
DESIGNED TO SIMPLIFY THE PREPARATION OF THICKENED BEVERAGES**



EASY

Simple to use liquid concentrate
delivered through a dispenser
for convenient dosing



FAST

Quick dissolution and
preparation of thickened
beverages



SAFE

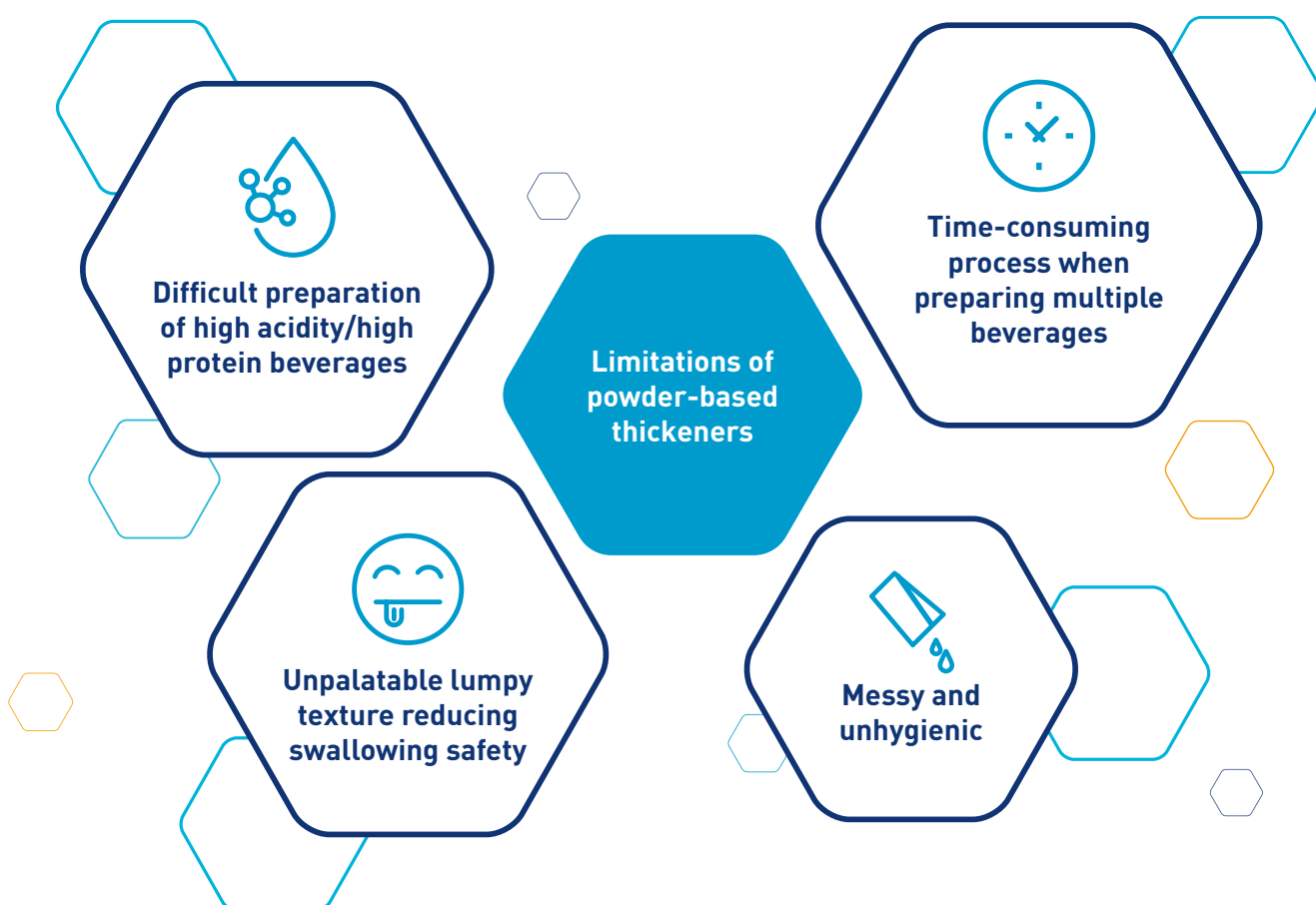
Improved swallowing safety
and efficiency by increasing
viscosity of beverages¹

IMPROVING SWALLOWING SAFETY AND EFFICIENCY BY INCREASING THE VISCOSITY OF LIQUIDS IS A KEY ASPECT OF OD MANAGEMENT

Modification of **TEXTURE**
and **FLUID VISCOSITY** of food
(i.e. bolus modification)

Enhanced **SWALLOWING SAFETY**
and **EFFICIENCY REDUCING**
THE RISK of pneumonia,
malnutrition and dehydration^{2,3}

IN CURRENT CLINICAL PRACTICE, THICKENED BEVERAGES ARE TYPICALLY PREPARED WITH POWDER-BASED THICKENERS



NURSES AND CAREGIVERS WOULD BENEFIT FROM A MORE CONVENIENT AND MESS-FREE METHOD OF PREPARING THICKENED BEVERAGES⁶



Many beverages need to be custom-prepared every day^{4,5}



There is a need for more convenient and less-time consuming tasks

THICKENUP® GEL EXPRESS IS A NOVEL CONCENTRATED LIQUID THICKENER DESIGNED TO SIMPLIFY THE PREPARATION OF THICKENED BEVERAGES AND TO IMPROVE THE EFFICIENCY OF MANAGEMENT IN ALL SETTINGS

DESIGNED FOR USE IN A WIDE RANGE OF OD PATIENTS:



Range of underlying pathologies e.g. dementia, stroke, head & neck cancer



Specific nutritional needs e.g. due to diabetes, constipation



Dietary restrictions e.g. vegetarian

Desired thickness achieved rapidly, even in challenging drinks

Unique blend of xanthan and plant-based acacia gum

Target viscosity achieved faster than with powder-based thickeners



450ml
~100 doses

Smooth texture, contributing to patient compliance

Amylase-resistant, preventing degradation by saliva enzymes

Convenient and hygienic preparation

DISPENSER CAN CONSISTENTLY PRODUCE ACCURATE DOSING OF ALL REQUIRED LEVELS OF THICKENED BEVERAGES (IDDSI LEVELS 1-4)

Recommended dosage IDDSI Framework				
	1	2	3	4
	Slightly thick	Mildly thick	Moderately thick	Extremely thick
150 ml +	1X	2X	4X	6X
Stir for 30 seconds. Wait a minimum of 5 minutes for the liquid to thicken until desired consistency is reached.* For IDDSI Level 4, limit the 150 ml servings to 7/day.				

THICKENUP GEL EXPRESS REMAINS STABLE IN THE BOTTLE FOR UP TO 12 MONTHS AND CAN BE USED UP TO 8 WEEKS AFTER INITIAL USE

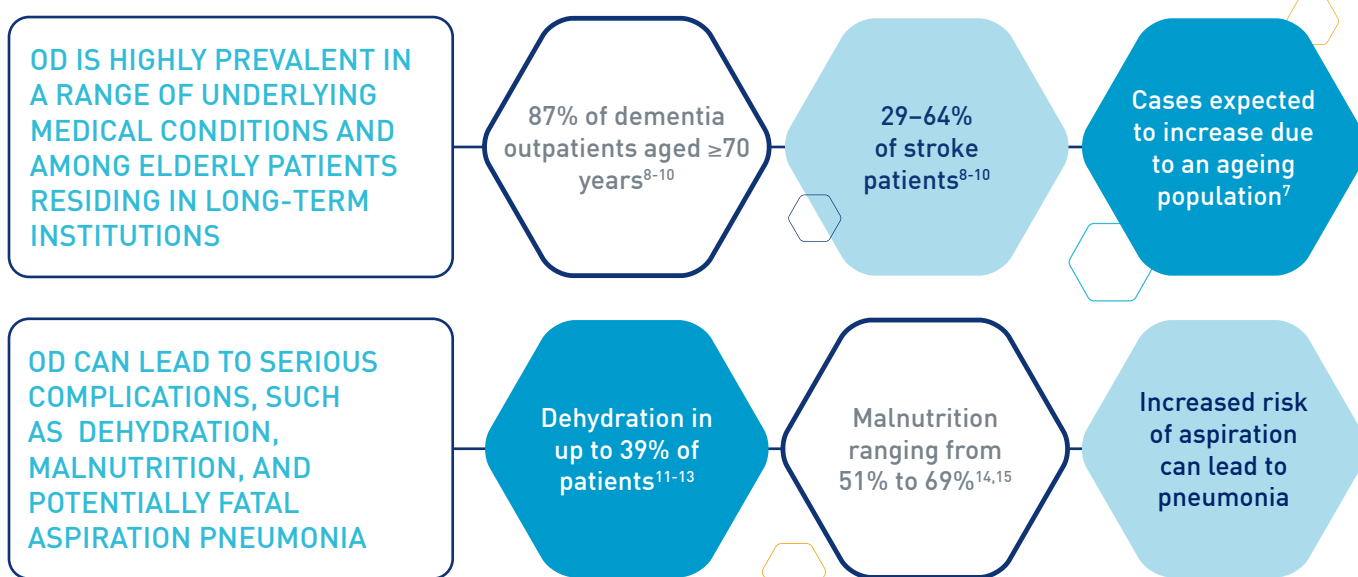
THICKENUP® GEL EXPRESS REMAINS UNALTERED OVER TIME

- Microbiological stability
- Homogeneous
- No phase separation

*1 dose = 4.6ml; IDDSI = International Dysphagia Diet Standardisation Initiative

BURDEN OF OROPHARYNGEAL DYSPHAGIA (OD)

OROPHARYNGEAL DYSPHAGIA IS DEFINED AS AN IMPAIRMENT OF THE SWALLOWING PROCESS⁷



OD can be distressing, imposing a physical, psychological and emotional burden on patients, caregivers and healthcare providers

- Nursing home residents report anxiety, panic and embarrassment at mealtimes^{16,17}
- Feeding or hydrating patients is time consuming and can increase feelings of burden and distress for caregivers¹⁸



Costly complications and resources required for OD patients generate a substantial economic burden for healthcare systems

- Longer hospital stays due to dehydration and malnutrition (2.99 more days)¹⁹
- High costs of aspiration pneumonia²⁰
- Preparing beverages can be time-consuming for nursing staff, diverting resources from other nursing tasks

MAY 2021
THICKENUP® EXPRESS GEL

REFERENCES

1. Steele CM *et al.* Dysphagia, 2019
2. Smith Hammond C *et al.* Chest, 2006
3. Kotecki S *et al.* Nurs Econ, 2010
4. Jukic Peladic N *et al.* J Am Med Dir Assoc, 2019
5. Sarabia-Cobo CM *et al.* Appl Nurs Res, 2016
6. McCormick SE *et al.* Age Ageing, 2008
7. Aslam M *et al.* Gastroenterol Hepatol, 2013
8. WGO Global guidelines, 2016
9. Michel A *et al.* J Am Med Dir Assoc, 2018
10. Baijens LW *et al.* Clin Interv Aging, 2016
11. Cichero J *et al.* Clin Nutr Highlights, 2012
12. Lebovitz A *et al.* Gerontology, 2007
13. Menten J *et al.* Gerontol Nurs, 2006
14. Huppertz VAL *et al.* Nutr Health Aging 2018
15. Carrion S *et al.* Clin Nutr, 2017
16. Jones E *et al.* Dysphagia, 2018
17. Ekberg O *et al.* Dysphagia, 2002
18. Namasivayam-MacDonald A *et al.* Geriatrics, 2018
19. Attrill S *et al.* BMC Health Serv Res, 2018
20. Cichero J *et al.* Nestle Nutr Inst Workshop Ser, 2012



Valid Insight, Kemp House 152 City Road,
London, EC1V 2NX, United Kingdom

©2021 Nestle Health Sciences

All rights reserved throughout the world and in all languages. No part of this publication may be reproduced, transmitted or stored in any form or by any means either mechanical or electronic, including photocopying, recording, or through an information storage and retrieval system, without the written permission of the copyright holder.

Although great care has been taken in compiling the content of this publication, Valid Insight is not responsible or in any way liable for information contained or for any errors, omissions or inaccuracies, or for any consequences arising therefrom. Provided as a service to healthcare professionals by Nestlé Health Science HQ, Switzerland.